

ATS&R



Ferson Creek Elementary Community Meeting

April 29, 2008

Agenda...

- Introduction
- Approach to Evaluation
- Building utilization review
- Small group activity
- Reporting / Prioritization

ATS&R Background- School Specialists

- 63 Years as school specialists
- 98% of workload is PreK-12 schools
- Staff of 84 with in-house services:
 - Pre-Referendum Planning
 - Facilities Master Planning
 - Architectural
 - Mechanical/ Electrical
 - LEED Certification
 - Technology
 - Site Development
 - Construction Administration
 - Interior Design
 - Specifications/ Quality Control
 - Total Energy Checkpoint
- National Exposure
 - School Experience Nationally and Internationally
 - CEFPI-AASA-ASBO-NSBA-ITTE-CSI-NASSP
 - Recognized Presenters/Authors



District 303 Vision Statement

C.U.S.D 303
St. Charles School District

“The District 303 School Community empowers and inspires ALL to

- Attain excellence
- Learn with passion, and
- Live with integrity in a changing world.”

Agenda...

- Introduction
- **Approach to Evaluation**
- Building utilization review
- Small group activity
- Reporting / Prioritization

Approach to Evaluation

- Comprehensive assessment of all schools
- Community group involvement
- Developing a Master Facilities Plan



St. Charles North High School

Develop a Master Facilities Plan

Providing a solid foundation for the Master Plan

- Supported by the assessment and community engagement process
- Responds to research on demographics, space, etc.
- Open, honest communication with the community
- Guide for planning and improvement projects for the next 20 years



STANDARDS - Elementary Schools



ROOM SIZES	Min	High				
Kindergarten Room	1,200	1,500	15 - 25	students	plus-	toilets
Classrooms	900	950	15 - 25	students		
Early Childhood	1,000	1,400	15 - 25	children	incl.-	toilet / coats
Special Education						
Small Group	450		5 - 8	students		
Classroom	800					
Lab	1,200					
Art (multi purpose CR / Lab)	1,000	1,500				
Music (General)	1,000	1,500				
Physical Education (PE)	3,000	4,000				
Multipurpose room	1,700					
Adaptive PE	500					
PE storage	300					
Learning Resource Center						
Reading (w/ comp. resource)	2,800	3,650	350 - 600	students		
Support	600					
Computer Lab	1,000	1,200	20 - 30	students		
Food Service						
Dining	2,000	3,400	350 - 600	students	3 periods	
Kitchen	500	1,000			servicing -	minor prep
Support	1,300	2,200				
Student Services (Admin / Staff)	2,700	3,100	350 - 600	students		
Resource / Support						
Small Group	150	200	5 - 10	students		
Large Group	600	1,500	60 - 125	students		

SITE SIZES	Min	High				
Site (acres) 5 +1/100 students	9	11	350 - 600	students		
Site (acres) 10-15 +1/100 students (plus ROW, wetlands, retention, on site water or septic systems)	14	21	350 - 600	students		

EXPECTATIONS - All Schools

Safety:

Clear separation of bus / staff / visitor / walker site circulation
Site lighting

Security:

Active / passive systems
Controlled access entry / community use zone (s)

Accessibility:

ADA access to all teaching stations, community, staff areas
Appropriate special services rooms

Building:

Natural light to Classrooms
Appropriate type / size of teaching stations (Flexibility)
Core capacity to match building capacity

Ventilation:

Code required (+/- 12-15) CFM per person

Electrical:

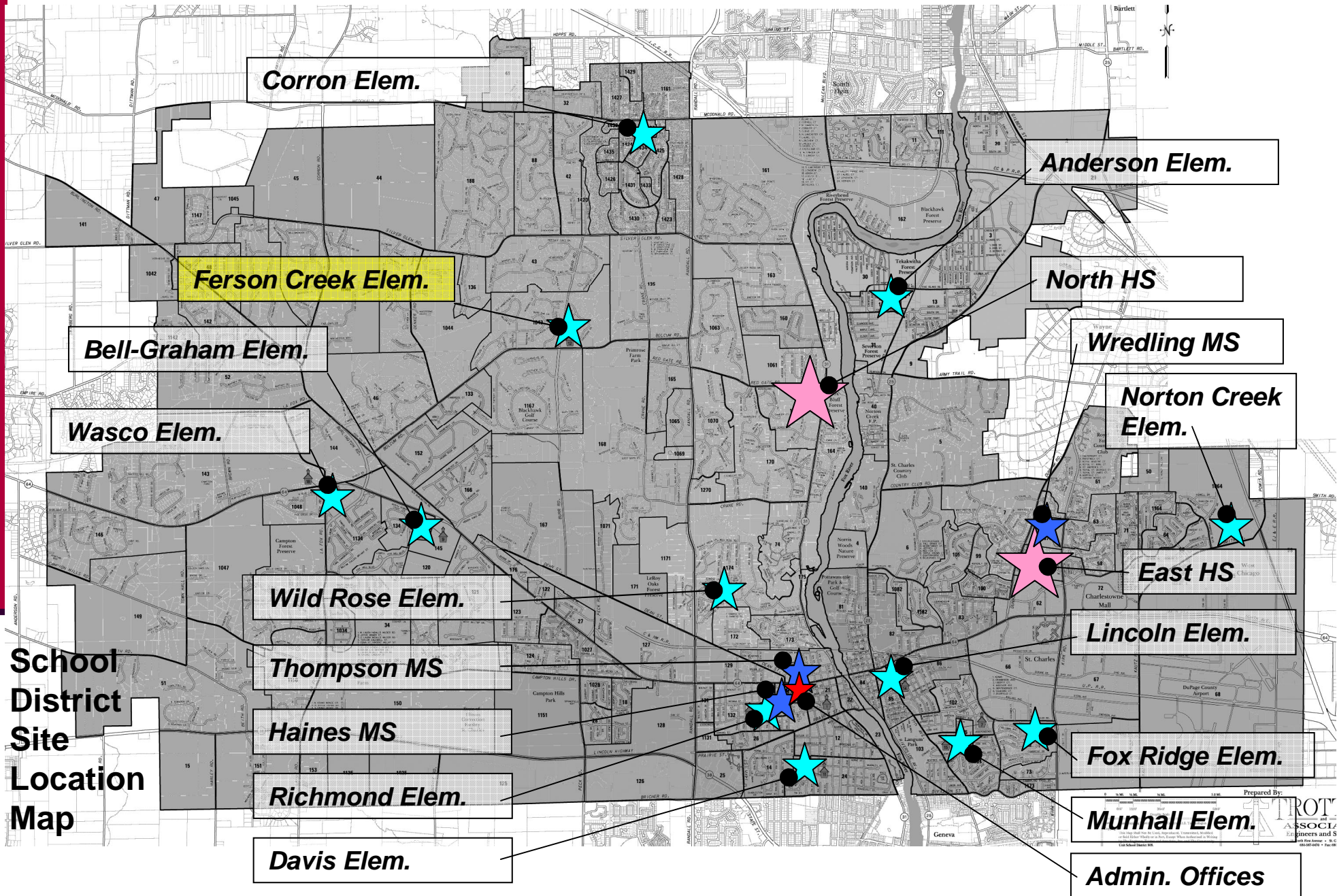
Properly sized electrical to support needs of site and building

Technology:

Appropriate Voice / Video / Data systems

Agenda...

- Introduction
- Approach to Evaluation
- **Building utilization review**
- Small group activity
- Reporting / Prioritization

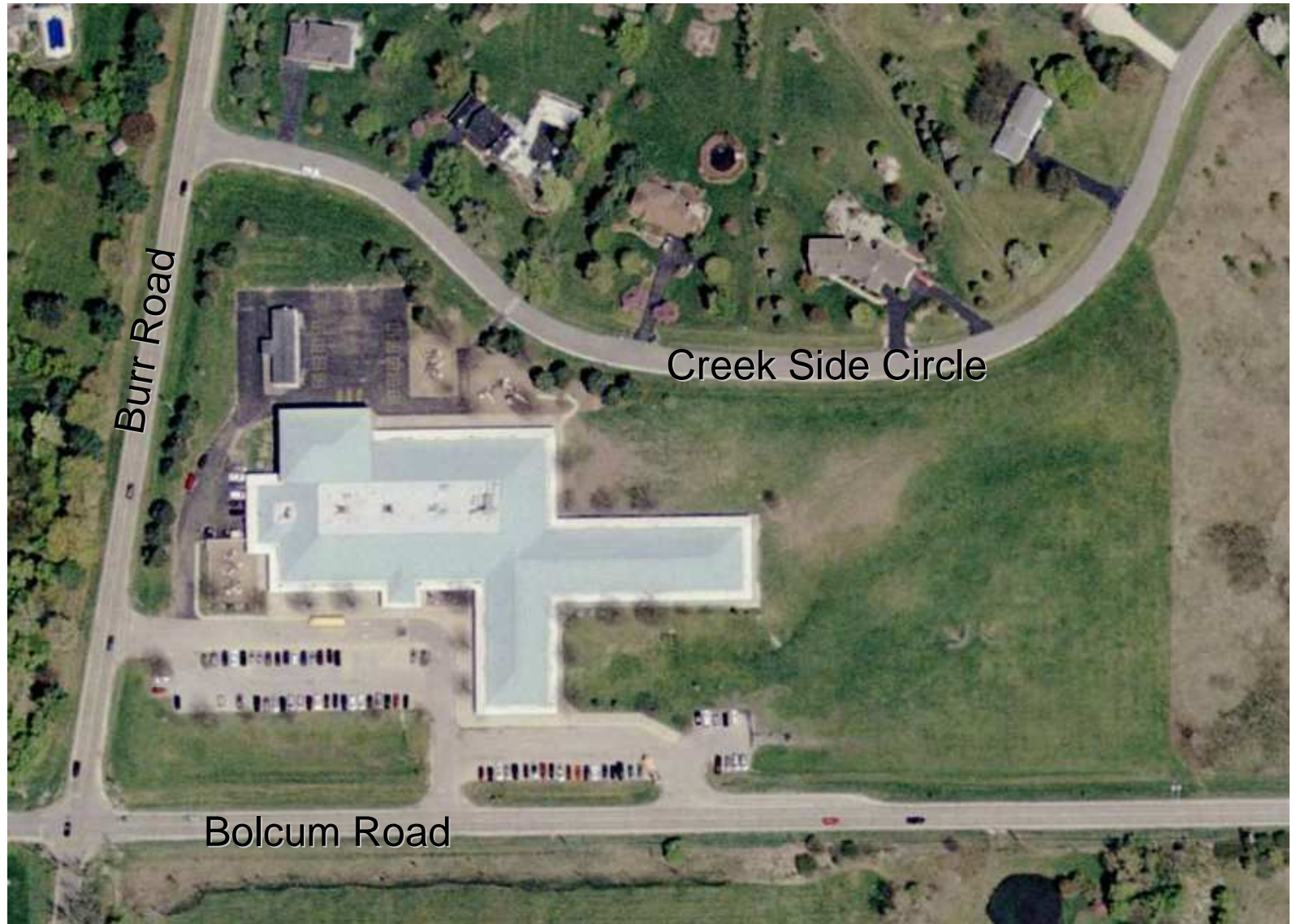


Prepared By:



© 2008 by the Professional Surveyors Association of Illinois

Ferson Creek Elementary School



Site Plan

Feb 15 2008

Ferson Creek Elementary School

SITE:

11.0 Acres

SCP guidelines:
5-11 acres

BUILDING:

65,950 sf
1,680 sf (mobile)
67,630 sf

630 Students

107 sf / student

MDE guidelines:
110-135 sf / student

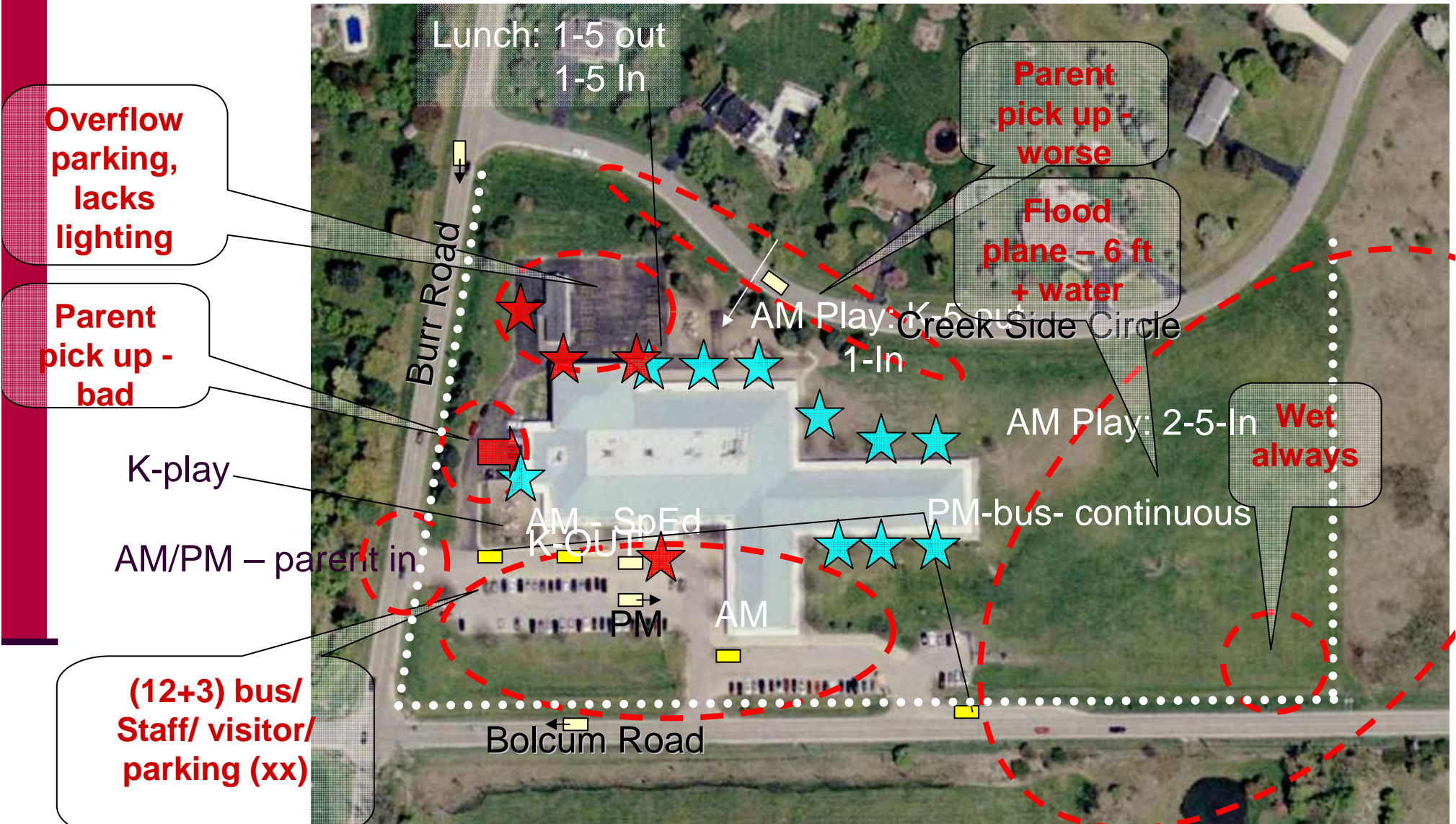
Built – 1989
Add'n –1990
(mobile)



Site Plan

Feb 15 2008

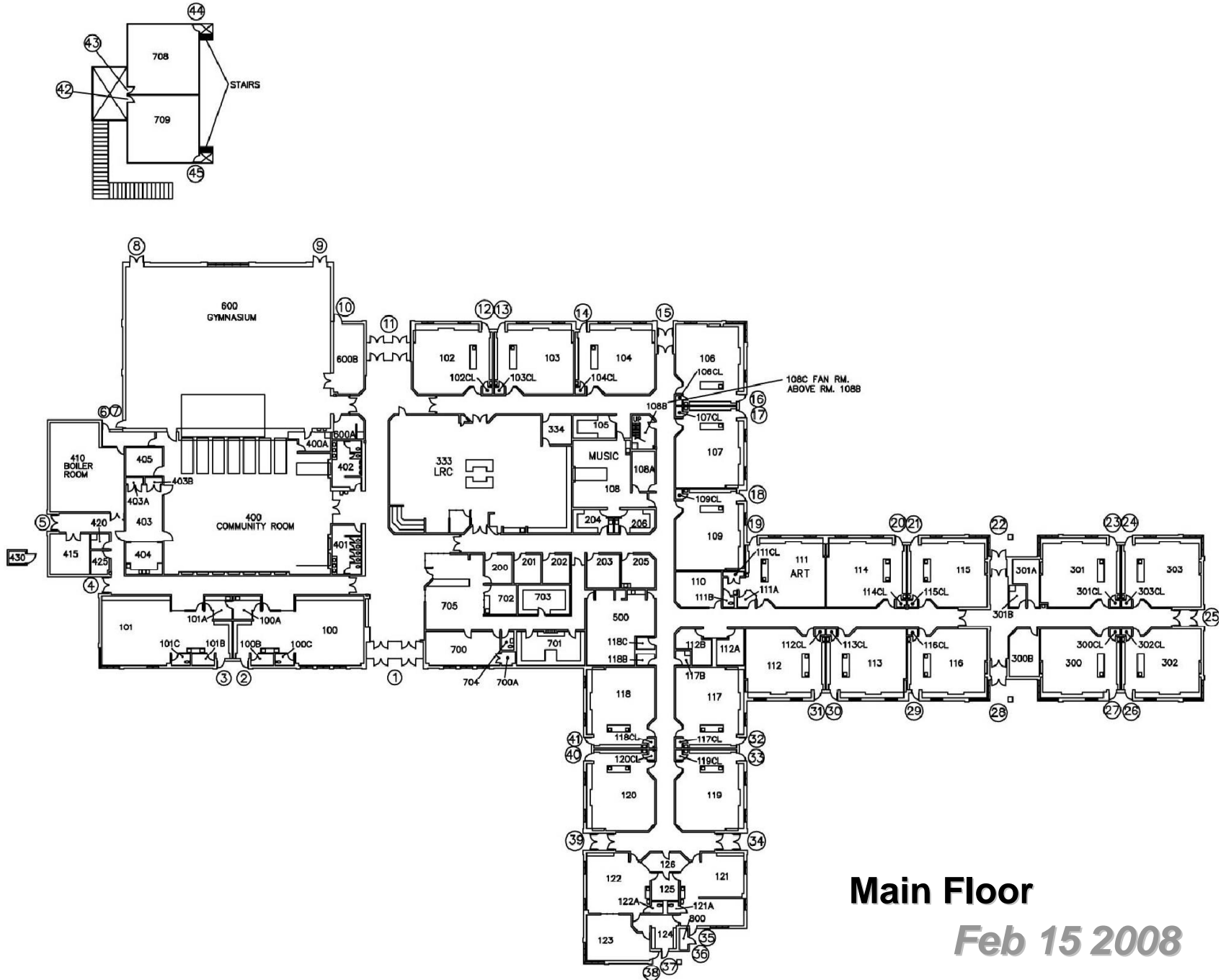
Ferson Creek Elementary School



Site Plan

Feb 15 2008

Ferson Creek Elementary School



Main Floor

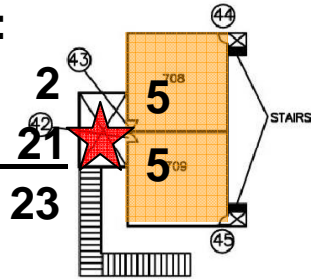
Feb 15 2008

Ferson Creek Elementary School

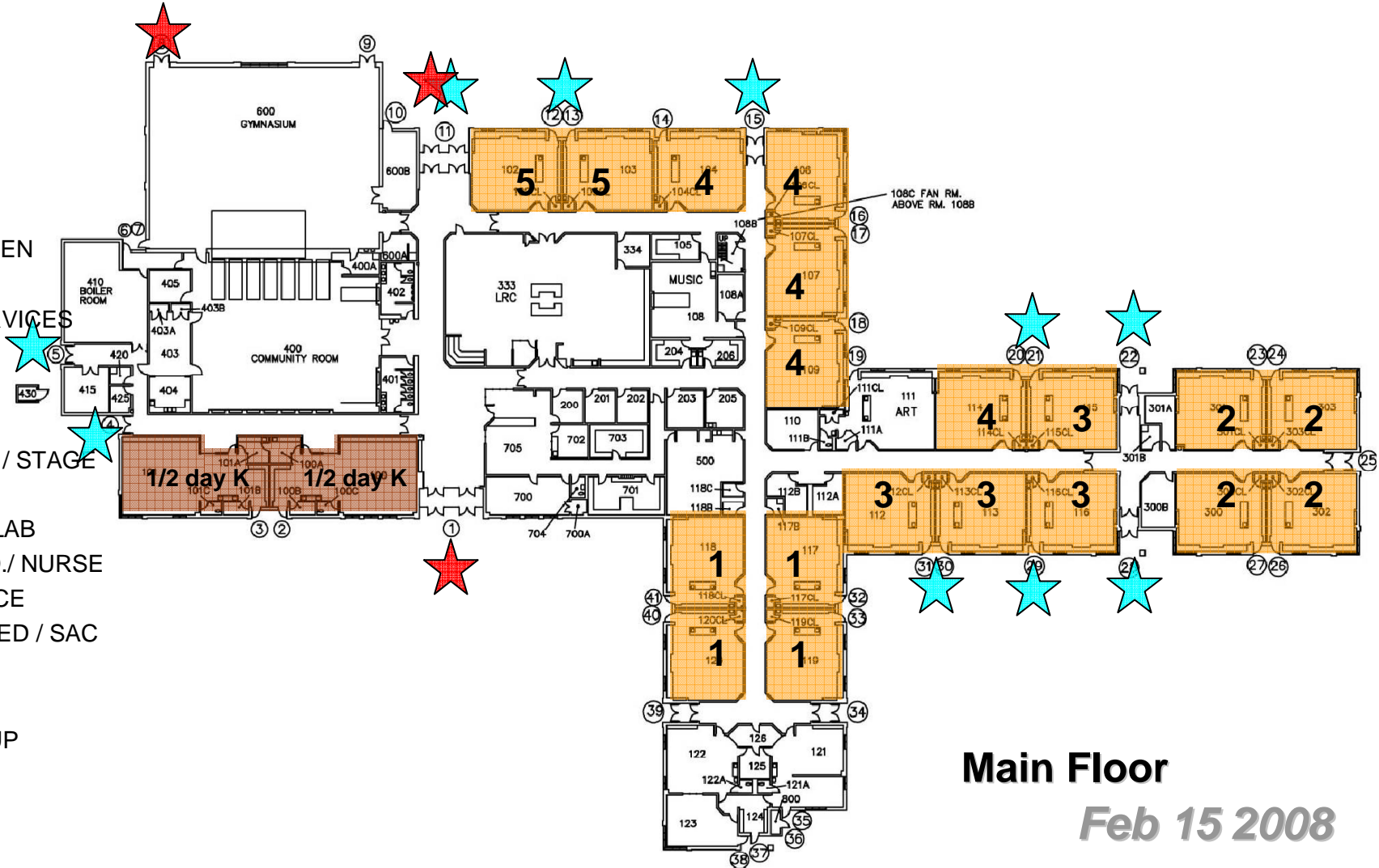
K-5 (4+ Sec):

K / EC

Grades 1-5



- KINDERGARTEN
- CLASSROOM
- SPECIAL SERVICES
- SCIENCE
- ART
- MUSIC
- AUDITORIUM / STAGE
- P.E.
- LRC / COMP LAB
- ADMIN./ GUID./ NURSE
- FOOD SERVICE
- CENTER BASED / SAC
- MECH / ELEC
- DISTRICT
- LARGE GROUP



Main Floor

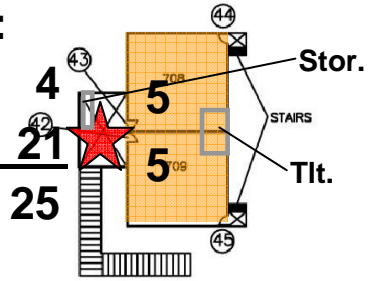
Feb 15 2008

Ferson Creek Elementary School

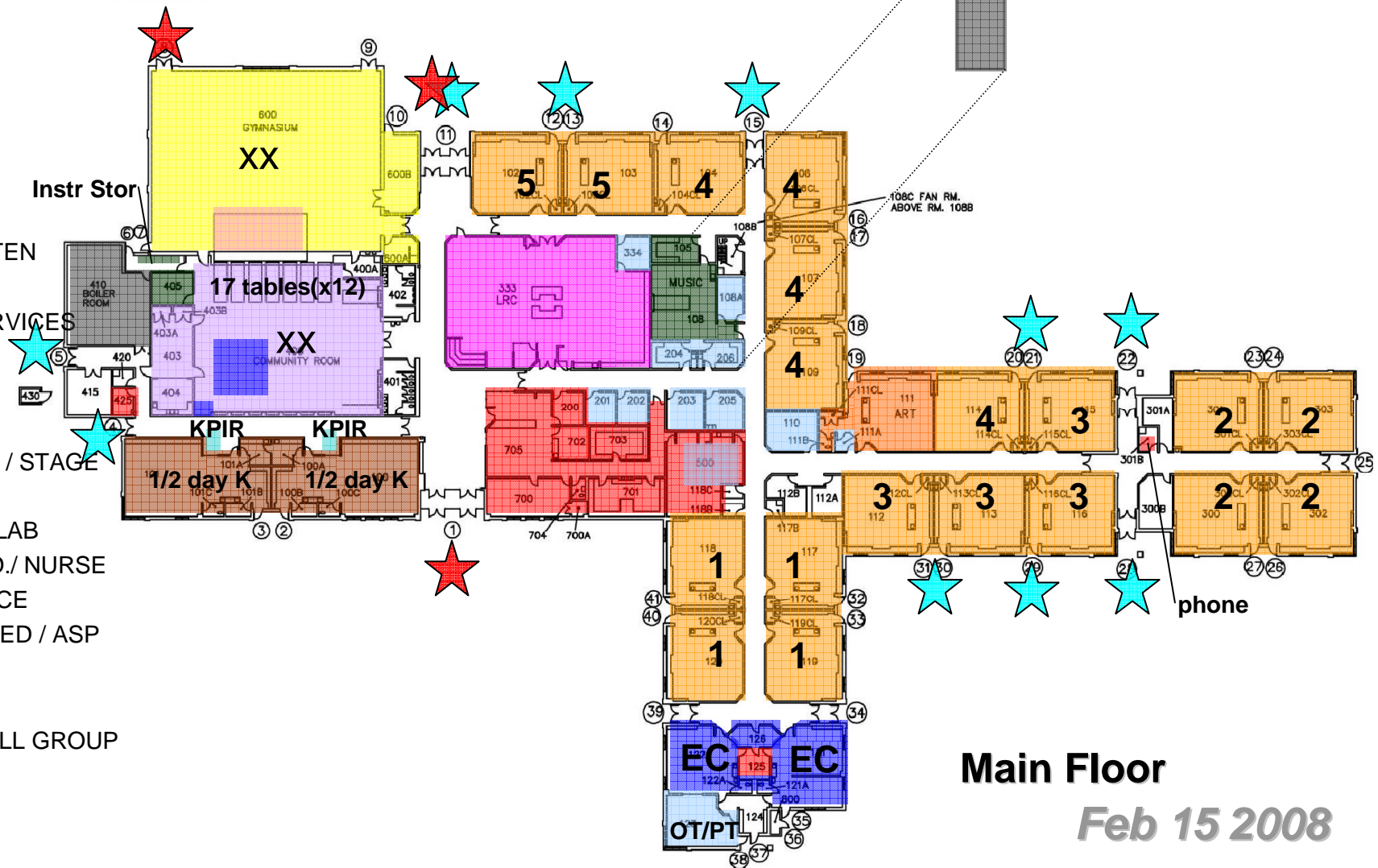
K-5 (4+ Sec):

K / EC

Grades 1-5



- KINDERGARTEN
- CLASSROOM
- SPECIAL SERVICES
- SCIENCE
- ART
- MUSIC
- AUDITORIUM / STAGE
- P.E.
- LRC / COMP LAB
- ADMIN./ GUID./ NURSE
- FOOD SERVICE
- CENTER BASED / ASP
- MECH / ELEC
- DISTRICT
- LARGE / SMALL GROUP



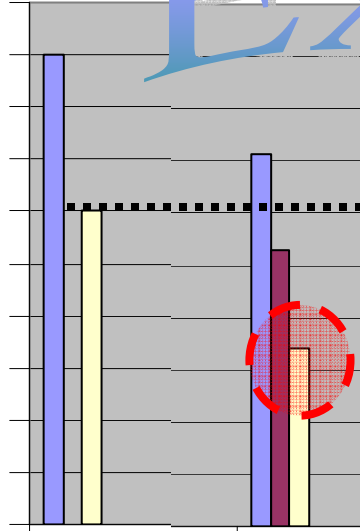
Main Floor

Feb 15 2008

KINDERGARTEN ROOMS

Square Footage

1,600
1,500
1,400
1,300
1,200
1,100
1,000
900
800
700
600



MDE

Davis (K-5)

Example

HIGH
TYPICAL
LOW

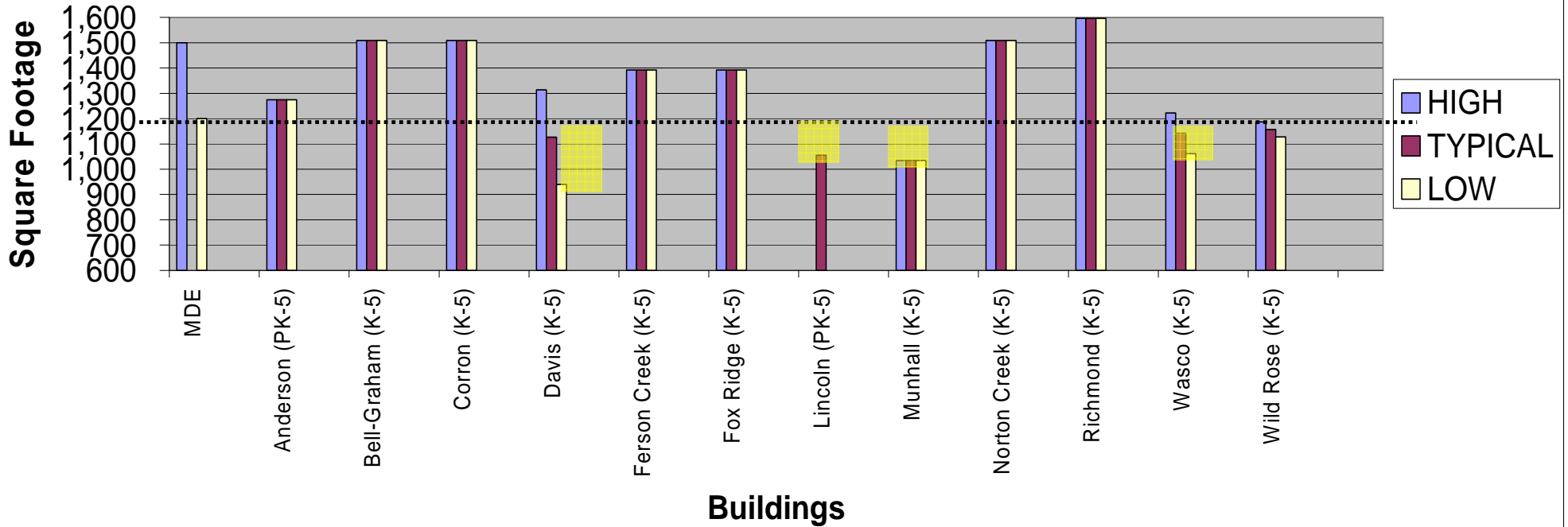
	Corcoran (K-5)	Davis (K-5)	Ferson Creek
HIGH	1,509	1,314	1,392
TYPICAL	1,509	1,127	1,392
LOW	1,509	940	1,392
1,200 sf or large	2	1	2
Less than 1,200 s		1	
TOTAL	2	2	2
	3,018	2,254	2,784

1 940

KINDERGARTEN ROOMS- ELEMENTARY SCHOOLS

	MDE	Anderson (PK-5)	Bell-Graham (K-5)	Corron (K-5)	Davis (K-5)	Ferson Creek (K-5)	Fox Ridge (K-5)	Lincoln (PK-5)	Munhall (K-5)	Norton Creek (K-5)	Richmond (K-5)	Wasco (K-5)	Wild Rose (K-5)															
HIGH	1,500	1,274	1,509	1,509	1,314	1,392	1,392		1,035	1,509	1,596	1,223	1,187	-														
TYPICAL	1,274	1,509	1,509	1,127	1,392	1,392	1,055	1,035	1,509	1,596	1,142	1,158	#DIV/0!															
LOW	1,200	1,274	1,509	1,509	940	1,392	1,392		1,035	1,509	1,596	1,061	1,128	-														
	2	2	2	2	1	2	2		2	2	1			16.0														
					1			1	2		1	1	1	7.0														
TOTAL	2	2,548	2	3,018	2	3,018	2	2,254	2	2,784	2	2,784	1	1,055	2	2,070	2	3,018	2	3,192	2	2,284	2	2,315	0	-	totals	23.0

KINDERGARTEN ROOMS

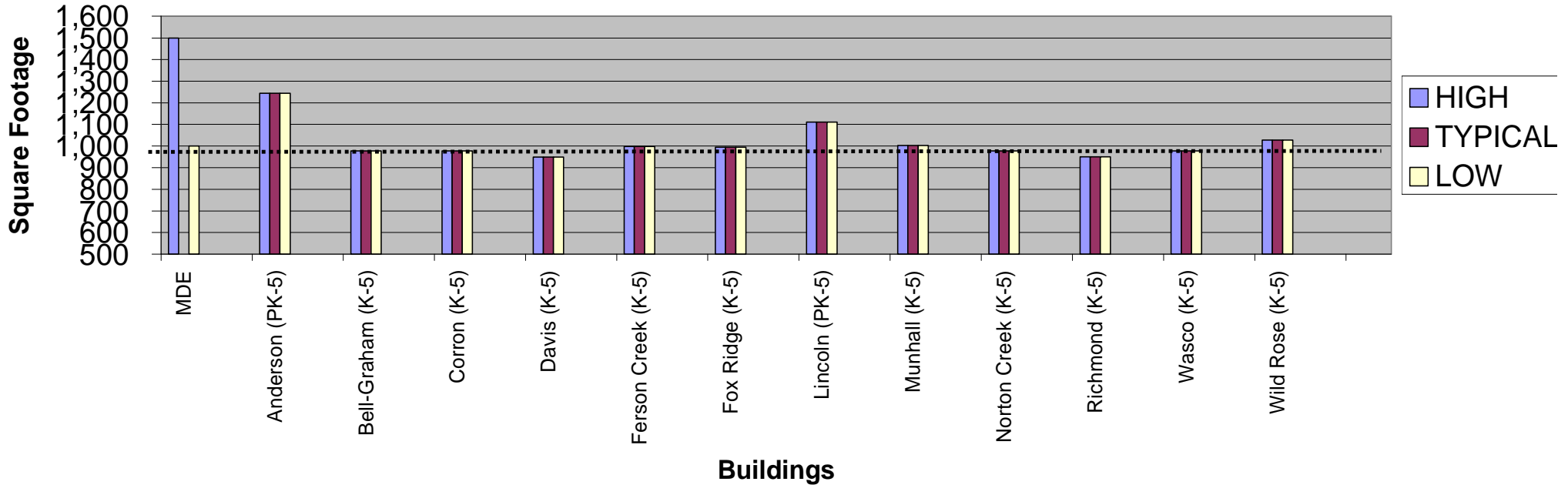


St Charles District 303

ART ROOMS – ELEMENTARY SCHOOLS

	MDE	Anderson (PK-5)	Bell-Graham (K-5)	Corron (K-5)	Davis (K-5)	Ferson Creek (K-5)	Fox Ridge (K-5)	Lincoln (PK-5)	Munhall (K-5)	Norton Creek (K-5)	Richmond (K-5)	Wasco (K-5)	Wild Rose (K-5)													
1,500	1,244	978	978	949	998	994	1,111	1,003	978	951	978	1,028	-													
1,000	1,244	978	978	949	998	994	1,111	1,003	978	951	978	1,028	#DIV/0!													
1,000 sf or larger	1	1,244					0.5	1,111	1	1,003			1	1,028												
Less than 1,000 sf		1	978	1	978	1	949	1	998	1	994		1	978												
TOTAL	1	1,244	1	978	1	978	1	949	1	998	1	994	1	556	1	1,003	1	978	1	951	1	978	1	1,028	0	-

ART / PROJECT



TES:

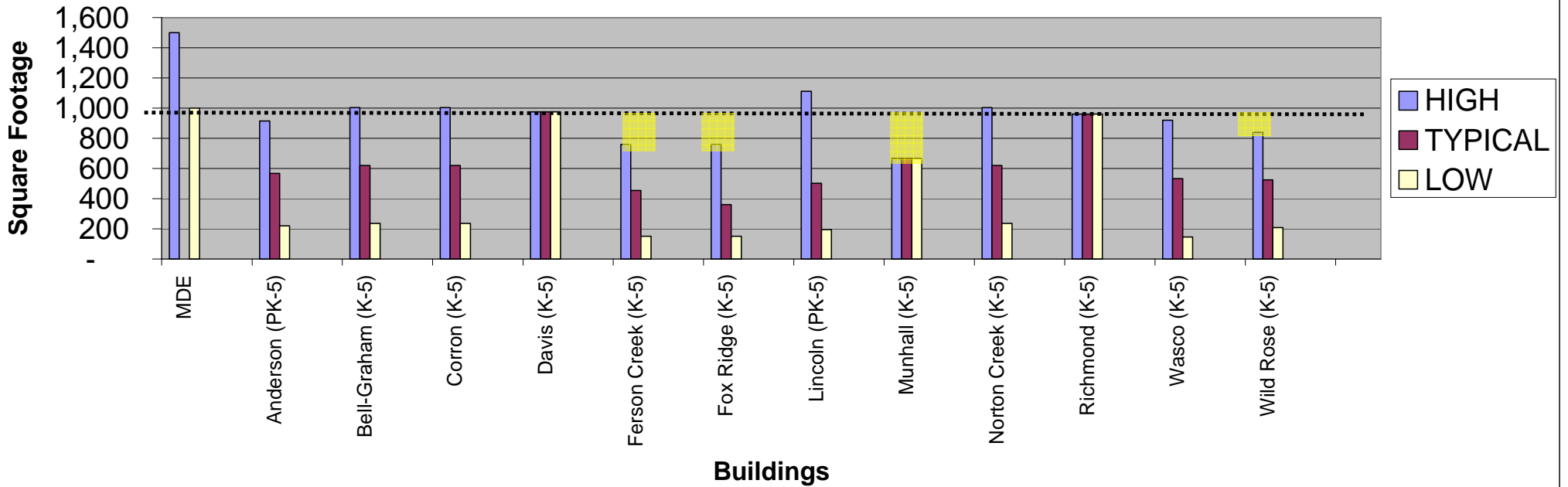
. Lincoln Art room shared with Music

St Charles District 303

MUSIC ROOMS – ELEMENTARY SCHOOLS

	MDE	Anderson (PK-5)	Bell-Graham (K-5)	Corron (K-5)	Davis (K-5)	Ferson Creek (K-5)	Fox Ridge (K-5)	Lincoln (PK-5)	Munhall (K-5)	Norton Creek (K-5)	Richmond (K-5)	Wasco (K-5)	Wild Rose (K-5)													
1,500	914	1,003	1,003	975	759	759	1,111	667	1,003	960	919	840	-													
	567	620	620	975	455	361	500	667	620	960	532	524	#DIV/0!													
1,000	219	236	236	975	150	150	195	667	236	960	145	208	-													
1,000 sf or larger		1	1,003	1	1,003			0.5	1,111	1	1,003															
Less than 1,000 sf	1	914	1	236	1	975	1	759	1	173	1	195	1	667	1	236	1	960	1	919	1	145	1	840	1	208
TOTAL	2	1,133	2	1,239	2	1,239	1	975	2	909	3	1,082	2	751	1	667	2	1,239	1	960	2	1,064	2	1,048	0	-

MUSIC



TES: . Lincoln Art room shared with Music

St Charles District 303

Agenda...

- Introduction
- Approach to Evaluation
- Building utilization review
- **Small group activity**
- Reporting / Prioritization

Main themes from groups at Summit 303 meeting on facilities (Mar 13)

- Safety and Security
- Increase Classrooms / class size - crowding
- Indoor air quality
- ADA / accessibility
- Space for programs / future needs

Your Input...

- List the sources of pride and strengths of **Ferson Creek Elementary School.**

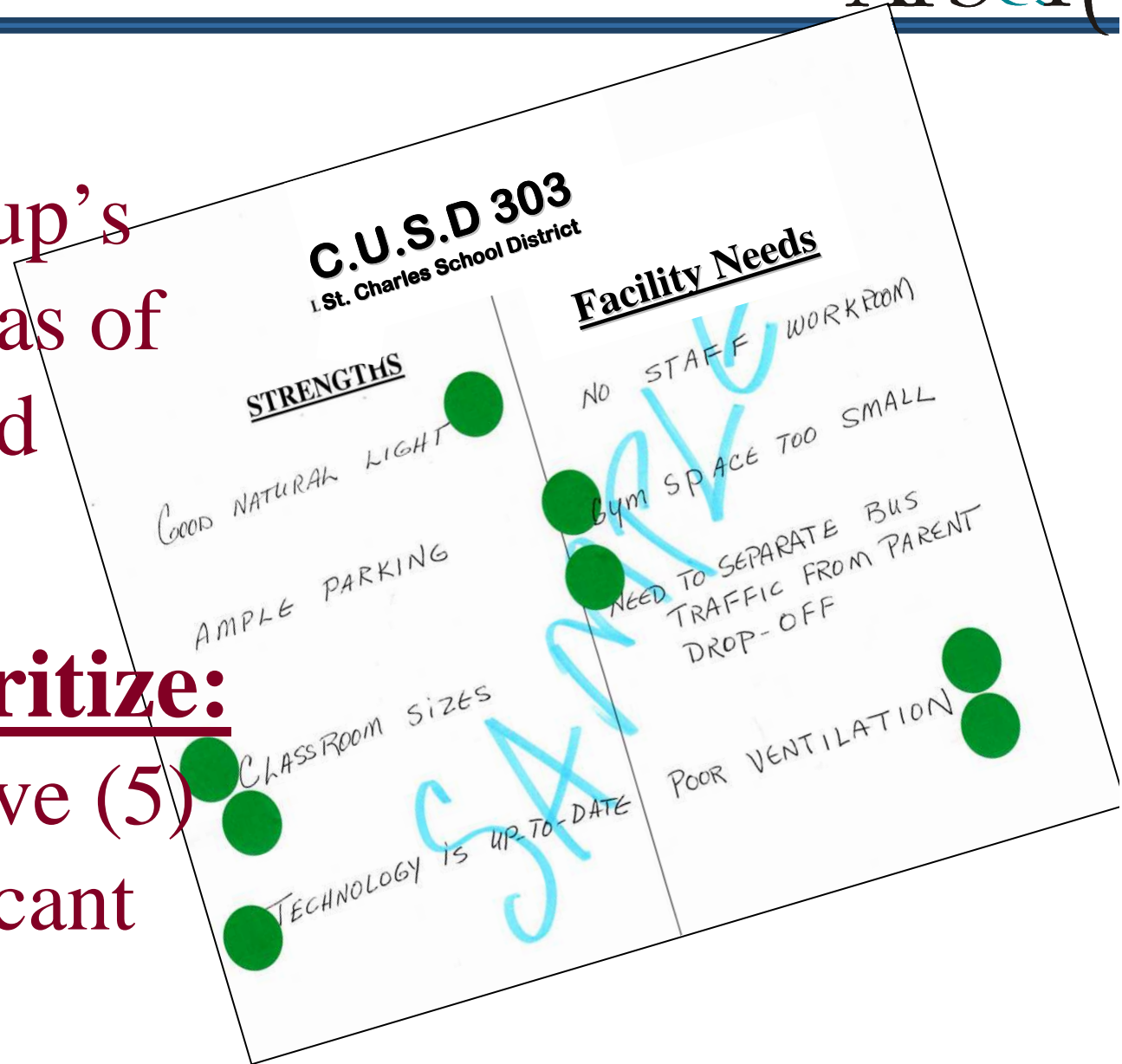
- List **facility** improvements (needs) that should be made for **Ferson Creek Elementary School.**

Record:

All of the group's reported areas of strengths and needs.

Group Prioritize:

Identify the five (5) most significant needs.



List the sources of pride and strengths of Ferson Creek Elementary School

- Great community – Staff, Communication, Safety event, Community/parent support
- Doors in classrooms for emergencies
- Site /land w 11 acres
- Up to date technology
- Classroom size is good (physical)
- Water filtration system
- Bus system for drop off & pick up

Identify the top 5 facility improvements/ needs that should be made for Ferson Creek Elementary School

1. Additions to eliminate mobiles, increase storage, classroom for all classes (20)
2. Temperature regulation in whole building – good air quality and air conditioning (19)
3. Generator for emergencies (9)
4. Classroom doors lockable from inside the room (4)
5. Larger music room – performance and classroom (2)
6. Control visitor access (2)

(the number in parenthesis () indicates the number of votes received during the prioritization process)

Other:

- Lighting outside – parking lots (1)
- Improved parking & traffic flow (1)
- Sound-proof the music room (1)
- Update emergency alarm system (0)
- Resurface sidewalks – slippage, drainage, etc. (0)
- Student #'s per class are too big (0)
- Well/Septic (0)
- Do we have to be a polling place? (0)

(the number in parenthesis () indicates the number of votes received during the prioritization process)

Thank You...